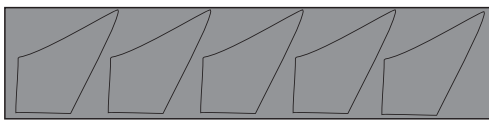
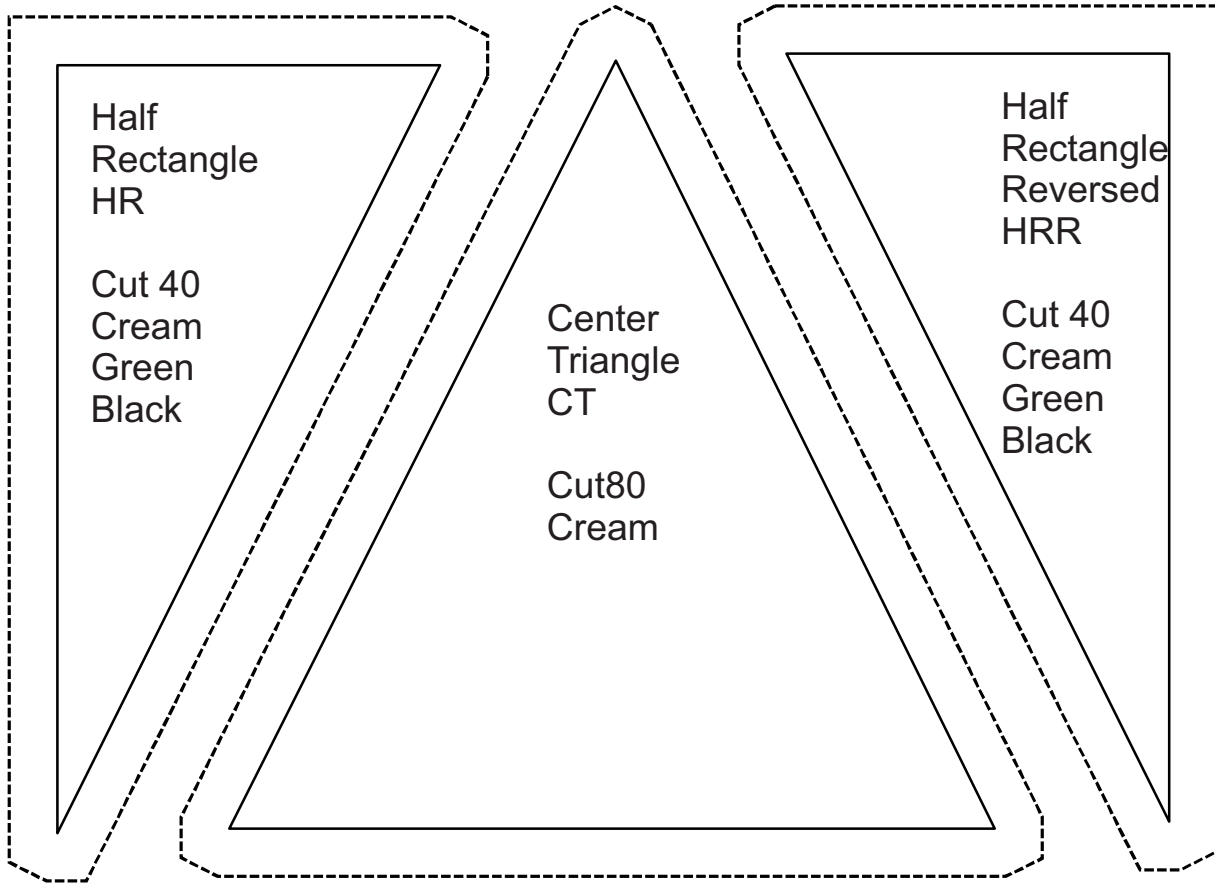
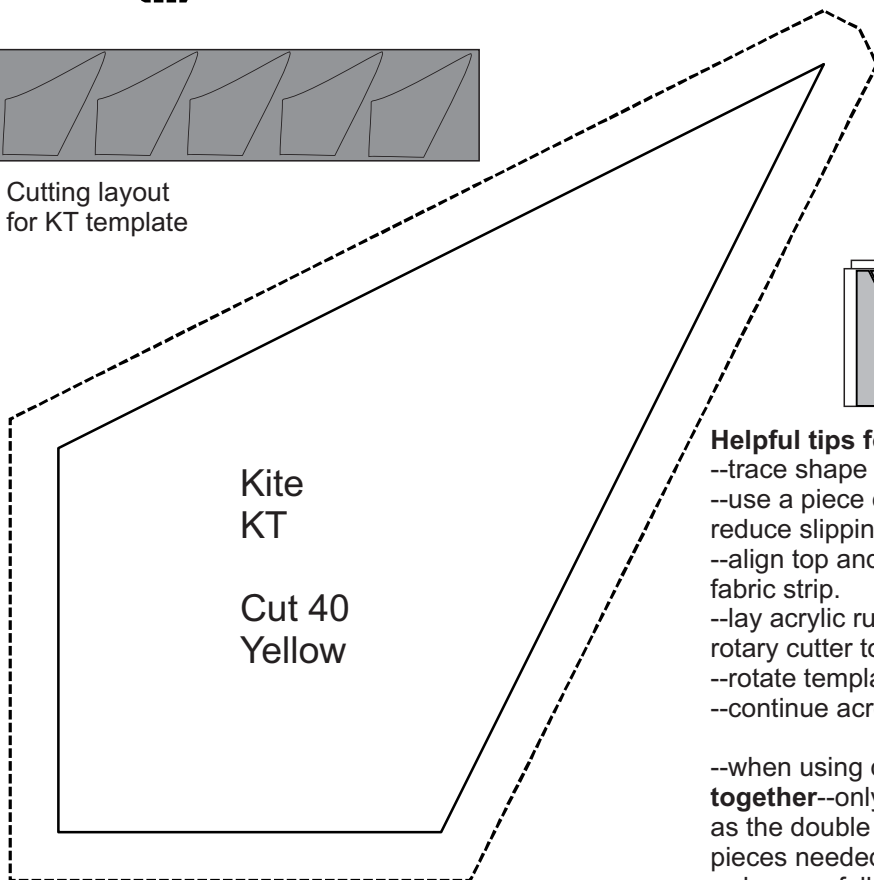
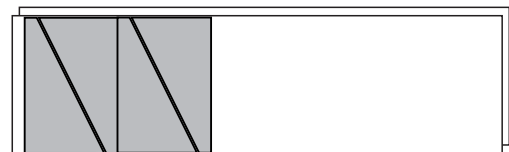
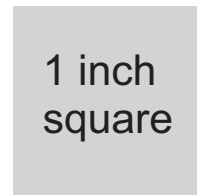


# Corn Grows Tall Here

Full Size Templates



Cutting layout for KT template



### Helpful tips for cutting HR pieces:

- trace shape to template material and cut out.
- use a piece of double stick tape on back of template to reduce slipping of template on fabric when cutting.
- align top and bottom edge of template with cut edges of fabric strip.
- lay acrylic ruler along diagonal of template and use rotary cutter to cut out HRT piece.
- rotate template 180 degrees and cut the long straight line.
- continue across fabric strip.
- when using cut fabric strip that is folded with **wrong sides together**--only one HR template will be needed to cut pieces as the double layer of fabric will produce the mirror image pieces needed.
- plan carefully before cutting!!!