



THE GREAT
SEWING
adventure
ACROSS
IOWA

STATE FAIR CROSSING

Q U I L T

83" x 83" QUILT

By Julie Montgomery
of Cedar Rapids, Iowa



READ THROUGH ALL INSTRUCTIONS BEFORE BEGINNING. SEW PIECES RIGHT SIDES TOGETHER AND USE A 1/4" SEAM ALLOWANCE THROUGHOUT UNLESS OTHERWISE STATED. WOF - WIDTH OF FABRIC, QST - QUARTER SQUARE TRIANGLES, HST - HALF SQUARE TRIANGLES

There are different ways to cut and piece QST, HST, Parallelograms - Traditional, Specialty Ruler, AccuQuilt - you choose your preferred method. The cutting instructions here will be for Traditional cutting. Accuquilt cutting instructions are available online at www.AllIowaShopHop.com. To use Half Square and Quarter Square rulers, adjust the strip width to get the desired size unit. Save your scraps, to be used for multiple components.

This quilt uses some of the 9" squares from the All Iowa Shop Hop. If you choose, you can insert the block patterns you receive at the stores which is a nice way to use the patterns from each of the stores you visit. However, you won't get the symmetrical pattern as in this quilt.

MATERIALS:

4-1/4 yards Word Toss, Cream
2-1/2 yards Word Toss, Red
3-1/2 yards Word Toss, Blue
1-1/2 yards Animals, Green
5 yards Cream for Backing

CUTTING:

Label your cuts by letter and block

(A) — 3 1/2" Square (Cut) - AccuQuilt 6" Qube Die #1 or 12" Qube Die #2

Animals Green

Cut [20] — 3-1/2" squares for Block 2

Word Toss Blue

Cut [4] — 3-1/2" squares for Block 4

(B) — 2" Square (Cut) - AccuQuilt - 6" Qube Die #2

Animals Green

Cut [184] — 2" squares, [104] for Block 1 and [80] for Block 2

Word Toss Cream

Cut [48] — 2" squares for Block 3

Word Toss Blue

Cut [16] — 2" squares for Block 4

(C) — 3 1/2" HST (Cut) - AccuQuilt - 6" Qube Die #3 or 12" Qube Die #5

Word Toss Cream

Cut [16] HSTs for Block 4

(D) — 2" QST (Cut) - AccuQuilt - 6" Qube Die #4

Word Toss Cream

Cut [120] QSTs, [104] for Block 1 and [16] for Block 4

Word Toss Red

Cut [80] QSTs for Block 2

Animals Green

Cut [16] QSTs for Block 4

(E) — 2" HST (Cut) - AccuQuilt - 6" Qube - Die #5

Word Toss Cream

Cut [244] — [488]—HST, [104] for Block 1, [240] for Block 2, [144] for Block 3

Word Toss Blue

Cut [344]—HST, [104] for Block 1, [240] for Block 2

Word Toss Red

Cut [624]—HST, [208] for Block 1, [160] for Block 2, [192] for Block 3, [64] for Block 4

Animals Green

Cut [84]—HST, [52] for Block 1, [32] for Block 4

(F) — Square in a Square - AccuQuilt - 6" Qube - Die #6

Animals Green

Cut [12] — squares for Block 3

Word Toss Blue

Cut [13] — squares for Block 1

(G) — Using AccuQuilt HST and Parallelogram Dies

The Parallelogram is a directional die, cut with right-sides together or wrong-sides together

Word Toss Blue

Cut [48] Left and [48] Right Parallelograms - Die #7

Word Toss Cream

Cut [96] HSTs - Die #5

Animals Green

Cut [96] HSTs - Die #5

(H) — 2" x 3 1/2" Rectangle - AccuQuilt - 6" Qube - Die #8

Word Toss Cream

Cut [80] — 3-1/2" x 2" rectangles for Block 2

SASHING

Word Toss Cream

Cut [112] — rectangles

Cut [4] — 9-1/2" x WOF

Subcut [108] — 9-1/2" x 1-1/2" rectangles

Cut [1] — 1-1/2" x WOF

Subcut [4] — 1-1/2" x 9-1/2" rectangles

Word Toss Red

Cut [1] — 1-1/2" x WOF

Subcut [28] — 1-1/2" squares for corner stones

Word Toss Blue

Cut [2] — 1-1/2" x WOF

Subcut [36] — 1-1/2" squares for corner stones

BORDERS

Word Toss Blue

Cut [8] — 6-1/2" x WOF strips

BLOCK ASSEMBLY:

BLOCK 1

1. Make [104] HSTs **(E)** Cream/**(E)** Red.

Press to Cream. See Figure 1A.

Make [52] Flying Geese **(E)** Red/**(D)** Cream.

Press to Red. See Figure 1B.

Make [52] Flying Geese **(E)** Blue/**(D)** Cream.

Press to Blue. See Figure 1C.



Figure 1A



Figure 1B



Figure 1C

2. Make [52] Unit 1 Square **(EE)** Cream/Red and **(B)** Animals, Green. Press following arrows. See Figure 2A.

Make [52] Unit 2 **(EDE)** Red and Blue Unit.

Press following arrows. See Figure 2B.

Make [13] Square in a Square **(F)** Blue/**(E)**

Animals, Green. Press to Animals, Green.

See Figure 2C.

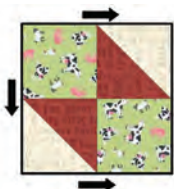


Figure 2A



Figure 2B

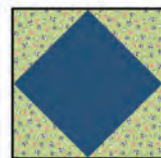


Figure 2C

Block 1 Assembly

Make [13] Blocks

1. Sew together like a 9-patch. Rotate Unit 1s so seams nest with Unit 2s. Follow direction of seam allowances.



BLOCK 2

1. Make [160] HSTs **(E)** Cream/**(E)** Red.

Press to Red. See Figure 3A.

Make [80] HSTs **(E)** Cream/**(E)** Blue.

Press to Blue. See Figure 3B.

Make [80] Flying Geese **(E)** Blue/**(D)** Red.

Press to Blue. See Figure 3C.



Figure 3A



Figure 3B



Figure 3C

2. Make [80] Unit 3 Square **(EE)** Cream/Red, **(EE)** Cream/Blue and **(B)** Animals, Green. Press following arrows. See Figure 4A.

Make [80] Unit 4 **(H)** Cream and **(EDE)** Blue/Red. Press to **(H)**. See Figure 4B.

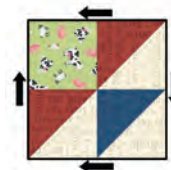


Figure 4A

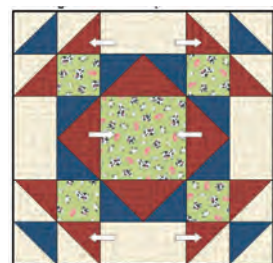


Figure 4B

Block 2 Assembly

Make [20] Blocks

1. Sew together like a 9-patch. Follow direction of seam allowances.



BLOCK 3

1. Make [72] HSTs **(E)** Cream/**(E)** Red. Press to Red. See Figure 5A.



Figure 5A



Figure 5B

2. Make [24] using Figure 5A HST pressed to Red. See Figure 6A.

Make [24] using Figure 5B HST pressed to Cream. See Figure 6B.

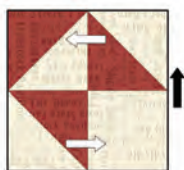


Figure 6A

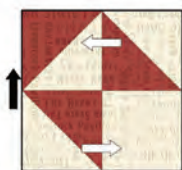


Figure 6B

AccuQuilt Parallelogram/HST Method

The parallelogram die is a directional die, cut with right-sides together or wrong-sides together

Word Toss Blue - Cut [48] Right and [48] Left Parallelograms - Die #7

Word Toss Cream - Cut [96] HSTs - Die #5

Animals Green - Cut [96] HSTs - Die #5

3. Unit 7 Make [24]. Press to one side. See Figure 7A.

Unit 8 Make [24]. Press to one side. See Figure 7B.



Figure 7A



Figure 7B

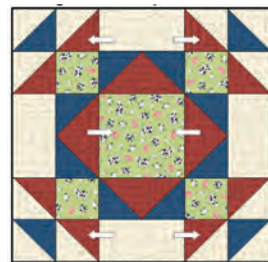
Square in a Square Unit. Make [12] - Press to Red.



Block 3 Assembly

Make [12] Blocks

1. Sew together like a 9-patch. Follow direction of seam allowances.



BLOCK 4

1. Make [16] Animals, Green **(E)** to Blue **(B)**. See Figure 8A.

Unit 9 Make [16] **(E/B/E)** Units to Cream **(C)**. See Figure 8B.



Figure 8A



Figure 8B

2. Make [16] **(E)** Red/**(D)** Cream. Press to Red. See Figure 9A.

Make [16] **(E)** Red/**(D)** Animals, Green. Press to Red. See Figure 9B.

Unit 10 Make [16]. Sew Green **(EDE)** to Cream **(EDE)**. See Figure 9C.



Figure 9A



Figure 9B

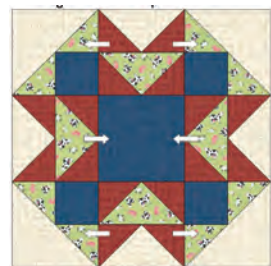


Figure 9C

Block 4 Assembly

Make [4] Blocks

1. Sew together like a 9-patch. Follow direction of seam allowances.



SASHINGS

1. Sew Sashing $1\frac{1}{2}'' \times 9\frac{1}{2}''$ Word Toss, Cream rectangle to the right side of all Blocks 1, 2, 3, and 4.
2. Sew Sashing $1\frac{1}{2}'' \times 9\frac{1}{2}''$ Word Toss, Cream rectangle to the left side of:
Blocks 1, 2, and 3 - [2] blocks each.
Block 4 - [1] block.
These blocks will be on the left side of the quilt.
3. Make [2] sashings with [8] $1\frac{1}{2}''$ Word Toss, Red cornerstones and [7] Word Toss, Cream sashing $1\frac{1}{2}'' \times 9\frac{1}{2}''$ rectangles. Press to Cream.



4. Make [6] sashings with [2] $1\frac{1}{2}''$ Word Toss, Red corner stones, [6] $1\frac{1}{2}''$ Word Toss, Blue cornerstones, and [7] Word Toss, Cream sashing $1\frac{1}{2}'' \times 9\frac{1}{2}''$ rectangles. Press to Cream.



QUILT ASSEMBLY:

1. Assemble blocks in rows according to Figure 10, remembering the column of blocks on left have sashings sewn on both sides of the block, the rest of the blocks only on the right side.
2. Assemble Rows of blocks and sashing according to Figure 10. Press to Sashing.

BORDER ASSEMBLY:

1. Sew the [8] $1\frac{1}{2}''$ Word Toss, Blue $6\frac{1}{2}'' \times$ WOF strips (J) for borders end to end.
2. Measure your quilt down the center of your quilt top center to get your measurement. Should be around $71\frac{1}{2}''$.

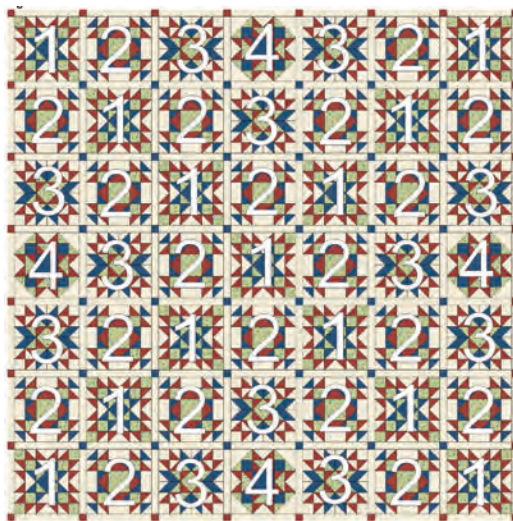


Figure 10

3. Cut [2] lengths according to quilt measurement. Sew to left and right sides of quilt top. Press toward border.
4. Measure your quilt across the center to get your measurement. Should be around $83\frac{1}{2}''$.
5. Cut [2] lengths according to quilt measurement. Sew to top and bottom of quilt top center. Press toward border. See Figure 11.

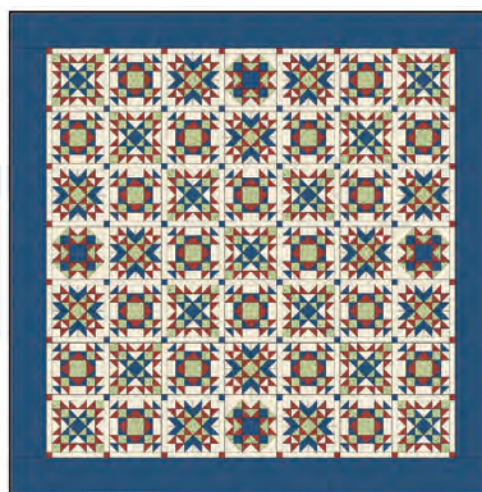


Figure 11

FINISHING:

1. Layer quilt top with batting and backing. Quilt as desired.
2. Bind and Enjoy!

JULIE MONTGOMERY



Julie is a wife, mother, grandma, and a Quilter. Her love of fabric and thread started before she can remember. In high school she made two prom dresses and her first quilt and went on to study fashion design. It wasn't until 2000 that she dove into quilting with wedding quilts, baby quilts, quilts given in love, and quilts to try new techniques. Her first love is piecing, (some very tiny), figuring out how best to construct a block, and color placement which led her to designing her own quilts. She does her own quilting on a Bernina Q20 with a love for free motion feathers and ruler work. She lives in East Central Iowa with her very supportive husband. Her two sons and daughter live close so she can spoil her three grandchildren.