

ALL IOWA
SHOP HOP

Bountiful Quilt

72 x 72"



Designed,
Pieced and
Quilted by:
Crystal, Brooklynn &
Daytonna Drummond
DayBrook Designs

MATERIALS:

1-1/8 yards Words
1-3/4 yards Farm Toss Blue
5/8 yard Leaves Green & Cream
3 yards Blender Black
2 yards Blender Cream
4-2/3 yards (40" WOF) or 2-1/3 yards (108" WOF)
of fabric of your choice for backing
82" x 82" Batting

RECOMMENDED TOOLS:

Creative Grids The Big Easy 12-1/2" x 24-1/2" Ruler
Creative Grids 5-1/2" Square Ruler
Creative Grids 4-1/2" Square Ruler
Bloc Loc 4" Kite in a Square Ruler Set
(If you do not have this ruler, templates are
included in this pattern)

FABRIC MEASUREMENTS INCLUDE APRX. 6" EXTRA TO ALLOW FOR SHRINKAGE WHEN WASHING AND POTENTIAL CUTTING ERRORS. BEFORE SEWING, READ ALL INSTRUCTIONS. ALL SEAMS ARE 1/4" UNLESS OTHERWISE STATED. SEW FABRICS RIGHT SIDES TOGETHER (RST). CUTTING INSTRUCTIONS ARE BASED ON 40" WOF. WOF = WIDTH OF FABRIC; HST = HALF-SQUARE TRIANGLE; QST = QUARTER-SQUARE TRIANGLE

CUTTING:

From Farm Toss Blue Fabric:

Cut [2] — 5-1/2" x WOF strips
Subcut [9] — 5-1/2" squares **(C)**
Cut [4] — 5-1/8" x WOF strips
Subcut [36] — pair Bloc Loc Side Triangles **(D)**
Cut [3] — 4-1/2" x WOF strips
Subcut [18] — 4-1/2" squares **(E)**
Cut [1] — 12-1/2" x WOF strip
Subcut [9] — 4-1/2" x 12-1/2" rectangles **(F)**

From Leaves Green & Cream Fabric:

Cut [3] — 5-1/4" x WOF strips
Subcut [18] — 5-1/4" squares **(A)**
Subcut [4] — 1-1/2" squares for Cornerstones

From Words Fabric:

Cut [8] — 4-1/2" x WOF strips, Outside Border

From Blender Black Fabric:

Cut [3] — 5-1/4" x WOF strips
Subcut [18] — 5-1/4" squares **(A)**
Cut [9] — 2-1/2" x WOF strips
Subcut [72] — 2-1/2" x 4-1/2" rectangles **(B)**
Cut [2] — 5-1/2" x WOF strips
Subcut [9] — 5-1/2" squares **(C)**
Cut [1] — 20-1/2" x WOF strip
Subcut [12] — 1-1/2" x 20-1/2" sashing
Cut [8] — 1-1/2" x WOF strips, Inside Border
Cut [8] — 2-1/2" x WOF strips, Binding

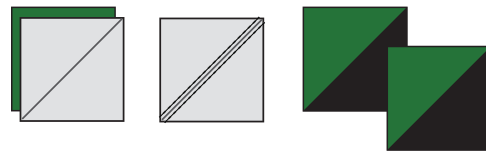
From Blender Cream Fabric:

Cut [9] — 2-1/2" x WOF strips
Subcut [72] — 2-1/2" x 4-1/2" rectangles **(B)**
Cut [3] — 5-1/2" x WOF strips
Subcut [18] — 5-1/2" squares **(C)**
Cut [4] — 7" x WOF strips
Subcut [36] — Bloc Loc Center Kites **(D)**

BLOCK ASSEMBLY:

UNIT A: Create 2 At-A-Time Half-Square Triangles (HST)

Unit A uses [18] Leaves Green & Cream with [18] Blender Black 5-1/4" squares = Yield [36] HST



1. Draw a diagonal line corner to corner on the wrong side of one square per set.
2. Place fabrics right side together.
3. Sew 1/4" on each side of the line.
4. Cut on the drawn line.
5. Open and press flat. Trim to 4-1/2" squares.

UNIT B: Create Split Squares

Unit B uses [72] Blender Cream with [72] Blender Black 2-1/2" x 4-1/2" rectangles = Yield [72] Split Squares



1. Place fabrics right side together.
2. Sew along 4-1/2" side.
3. Open and press flat. Trim to 4-1/2" squares.

UNIT C: Create Quarter-Square Triangles (QST)

Unit C uses [9] Farm Toss Blue, [9] Blender Black, [18] Blender Cream 5-1/2" squares = Yield 36. Each unit uses [2] squares.



1. Cut all squares diagonally from corner to corner twice, creating [4] triangles per square.
2. Layout triangles as shown to create each QST.
3. Place fabrics RST. Sew 1/4" seam.
4. Open to view large triangles consisting of [2] smaller triangles. Press.
5. Place large triangles RST. Sew 1/4" seam.
6. Open to view a square consisting of [4] small triangles. Press.
7. Trim to 4-1/2" HST. Aprx. 1/4" is available for trimming.

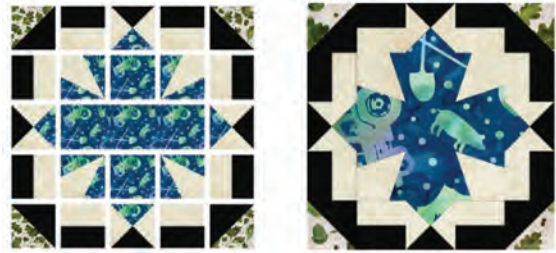
UNIT D: Create Kite in a Square

Unit D uses [36] Blender Cream Center Kite with [72] Farm Toss Blue Side Triangles = Yield 36. Each set uses [1] Center Kite and [1] Pair Side Triangles. The following instructions utilize the Bloc Loc 4-1/2" Kite in a Square ruler. If you don't have this ruler, template to Foundation Paper Piece is at end of this pattern. If foundation piecing, cut pieces oversized to trim down.



1. Following the Bloc Loc instructions, cut [10] Kites per 7" x WOF strip.
2. Next, cut [10] pair of sides per 5-1/8" x WOF strip.
3. Using one pair of Sides, place one Side right side together with the Kite. Sew a 1/4" seam.
4. Open to view. Press.
5. Place the opposite Side right sides together. Sew a 1/4" seam.
6. Open to view. Press.
7. Trim to 4-1/2" Kite in a Square. Aprx. 1/4" is available for trimming.

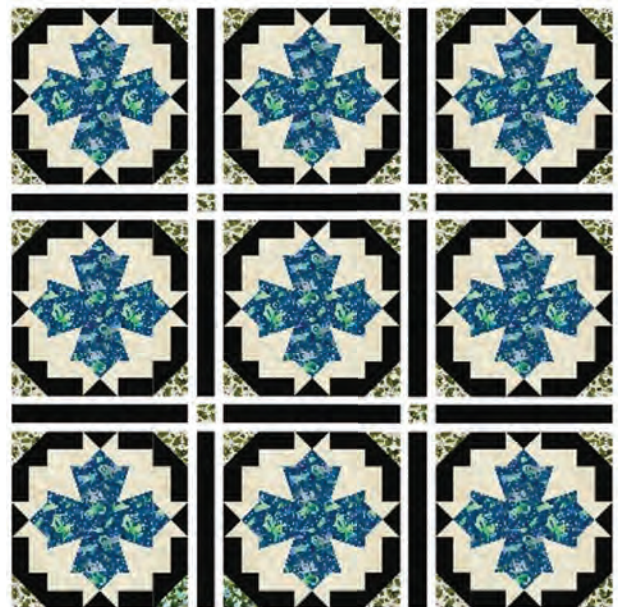
BLOCK ASSEMBLY:



1. Arrange units according to:
 Row 1: A - B - C - B - A
 Row 2: B - D - E - D - B
 Row 3: C - F - C
 Row 4: B - D - E - D - B
 Row 5: A - B - C - B - A
2. Sew neighboring units together. Press.
3. Sew neighboring rows together matching seams. Press. Create [9] total blocks.

QUILT TOP ASSEMBLY:

1. Arrange blocks according to:
 Row 1: Block - Sashing - B - S - B
 Row 2: Sashing - Cornerstone - S - C - S
 Row 3: Block - Sashing - B - S - B
 Row 4: Sashing - Cornerstone - S - C - S
 Row 5: Block - Sashing - B - S - B
2. Sew neighboring components. Repeat until each row is sewn. Press seams.
3. Sew neighboring rows together. Press seams.



BORDER ASSEMBLY:

Inside Border, Blender Black – Create:

[2] Sides 1-1/2" x 62-1/2"

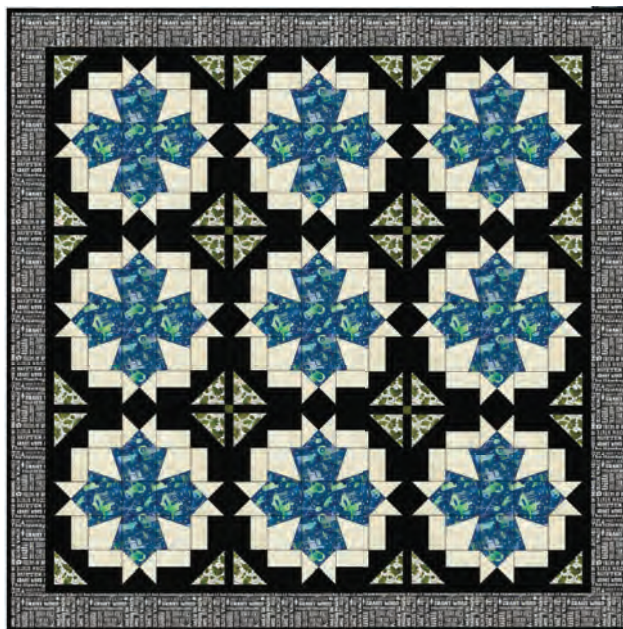
[2] Top/Bottom 1-1/2" x 64-1/2"

Outside Border, Words – Create:

[2] Sides 4-1/2" x 64-1/2"

[2] Top/Bottom 4-1/2" x 72-1/2"

1. To achieve the necessary length for each border, place [2] fabric strips RST. Sew seam across the short end. Press.
2. Measure length. Add an additional strip(s) if necessary to achieve desired length.
3. Trim excess fabric.
4. When attaching borders to the quilt top, it is important to be careful not to stretch the fabric. A wavy border will result. Measure and mark [4] equal sections of each border. Repeat for the section of the quilt top. Simply lay the border on the pressed quilt top matching the sections and pin to position.
5. Attach side borders. Press.
6. Attach top and bottom borders. Press.
7. Repeat the process for each border.



FINISHING:

1. Layer quilt top with batting and backing.
2. Quilt as desired.
3. Bind.
4. Enjoy!

Crystal, Brooklynn & Daytonna Drummond



The mother-daughter team – Crystal and teen daughters Brooklynn and Daytonna – thrive when creating together. They enjoy creating quality, easy to follow quilt patterns. Inspired by their Nebraska heritage and years spent traveling, the family offers a variety of styles to their designs. From traditional to modern, or vintage with a fl air, the gals are always ready to create something new and

exciting to share with you! For inspiration and ideas, www.daybrookdesigns.com. Share pictures of your quilt #DayBrookDesignsBountiful

1"
REGISTRATION

