

# Threads that Tie



23" x 23"

Designed by Lizard Creek Quilting for the  
2020 All Iowa Shop Hop



# Threads that Tie

Read through all instructions before cutting or sewing.

WOF--Width of Fabric--selvage to selvage

HST--Half Square Triangle

All measurements based on 42" WOF.

All seams are sewn with Right Sides Together--RST--and an accurate 1/4" seam allowance unless noted otherwise.

Organization is key--use the method that works best for you!!

## Fabric Requirements:

40171-68 Wine-Pink.....10" square  
40171-62 Turquoise-Jade.....10" square  
40171-62 Red-Orange.....10" square  
40171-54 Carmel-Cream.....5" x 10" rectangle  
Quilt Block--52001-1 Cream (background).....3/8 yard  
Shirting Stripe--4255A-20 Black.....1/4 yard  
Black--35370S-2 Jet Black--includes binding.....3/8 yard  
Batting.....25" x 25"  
Backing.....27" x 27"

1---Quilt Shop Block

1--Iowa Block

## Cutting Instructions:

Use 10" 40171-68 Wine-Pink, 40171-62 Turquoise-Jade and 40171-62 Red-Orange.

From each 10" square cut:

[2] 2 1/2" x 4 1/2" rectangles

[2] 2 7/8" squares. Cut once on diagonal to make 4 HST

# Threads that Tie

Use 40171-54 Carmel-Cream 5" x 10" Rectangle cut:

[2] 4 1/2" x 4 1/2" squares

Quilt Block--(52001-1 Cream background):

2 7/8" x 18" rectangle -

Sub-cut - [6] 2 7/8" squares - cut once on diagonal to make 12 HST

1 strip, 2 1/2" x WOF

Sub-cut - [6] 2 1/2" x 4 1/2" rectangles

3 strips, 2 1/2" x WOF

Sub-cut – [2] 2 1/2" x 19 1/2" right/left border units

[2] 2 1/2" x 23 1/2" top/bottom border units

Shirting Stripe (4255A-20 Black)

3 strips, 1 1/2" x WOF

Sub-cut - [12] 1 1/2" x 9 1/2" sashing rectangles

Black (35370S-2 Jet Black)

1 strip - 1 1/2" x WOF

Sub-cut - [9] 1 1/2" x 1 1/2" cornerstones

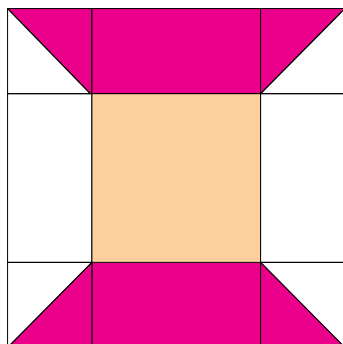
3 strips - 2 1/2" x WOF for binding

Quilt Shop Block -- trim to 4 1/2" x 4 1/2" square

Iowa Block --trim to 8 1/2" x 8 1/2" square

# Threads that Tie

## Spool Block Assembly

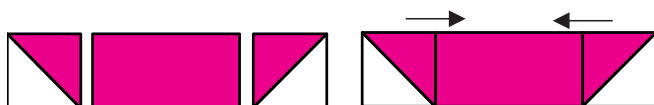


**NOTE: spool block instructions will be for one block. Make one of each color. Pay close attention to Quilt Shop Block wording orientation during step\*\*\*\*\*.**

1. Pin and sew one background HST to one 40171-68 Wine-Pink HST as shown. Press to pink. Will measure 2 1/2" x 2 1/2". Make 4.

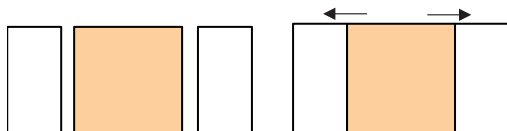


2. Pin and sew HST to opposite short ends of 40171-68 Wine-Pink rectangle as shown. Press to rectangle. Will measure 2 1/2" x 8 1/2". Make 2 top/bottom units.



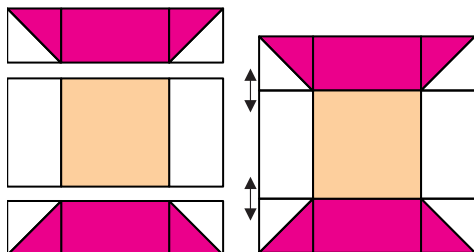
3. Pin and sew background rectangles to opposite sides of cream square or Quilt Shop Block. Press to rectangles. Will measure 4 1/2" x 8 1/2". Make 1 center unit.

NOTE: pay attention to word orientation when piecing the colored spool block using the Quilt Shop Block.



# Threads that Tie

4. Pin and sew top/bottom units to center unit as shown. Press seams open. Will measure 8 1/2" x 8 1/2". Makes 1 spool block.

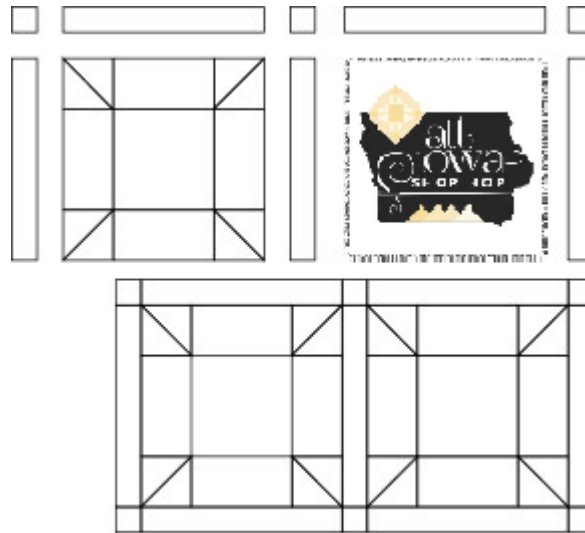


5. Repeat steps 1 – 4 using 40171-62 Turquoise-Jade and 40171-62 Red-Orange HST and rectangles to make 3 spool blocks.

## Quilt Assembly

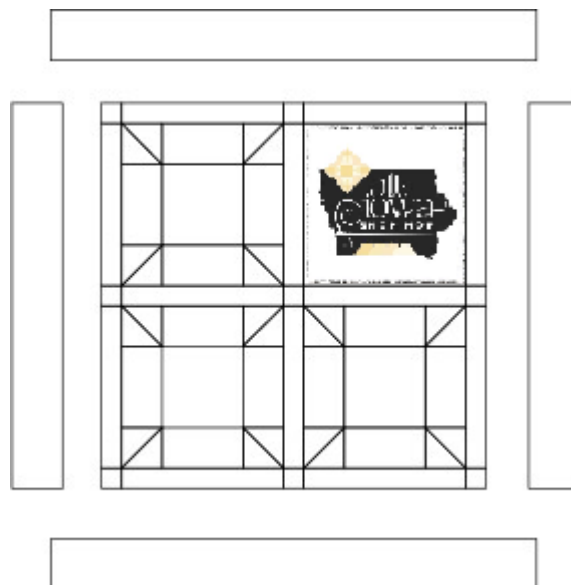
1. Pin and sew three black cornerstones to two sashing rectangles as shown in Diagram A. Press to sashing. Will measure 1 1/2" x 19 1/2".  
Make 3 sashing rows.
2. Pin and sew two blocks to three sashing rectangles as shown in Diagram A. Pay close attention to word orientation of blocks. Press to sashing. Will measure 8 1/2" x 19 1/2".  
Make 2 block rows.
3. Pin and sew sashing rows to block rows as shown in Diagram A. Press to sashing rows. Will measure 19 1/2" x 19 1/2".

# Threads that Tie



**Diagram A**

4. Pin and sew right/left border units to opposite side of quilt center as shown in Diagram B. Press to border units. Will measure 19 1/2" x 23 1/2".
5. Pin and sew top/bottom border units to opposite sides of quilt center as shown in Diagram B. Press to border units. Will measure 23 1/2" x 23 1/2".



**Diagram B**

# Threads that Tie

## Quilt Finishing:

1. Layer quilt top, batting and backing.
2. Quilt as desired. Note: A quilting suggestion – quilt top with long wavy overlapping lines using a walking foot as shown in Diagram C.

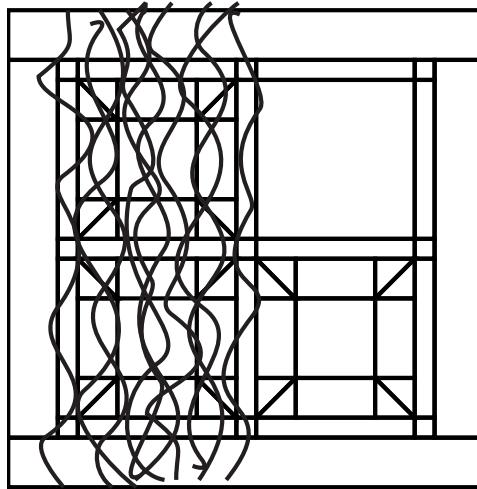


Diagram C

3. Bind using the [3] 2 1/2" x WOF Black (35370S-2 Jet Black) binding strips.
4. Label and ENJOY!!!